



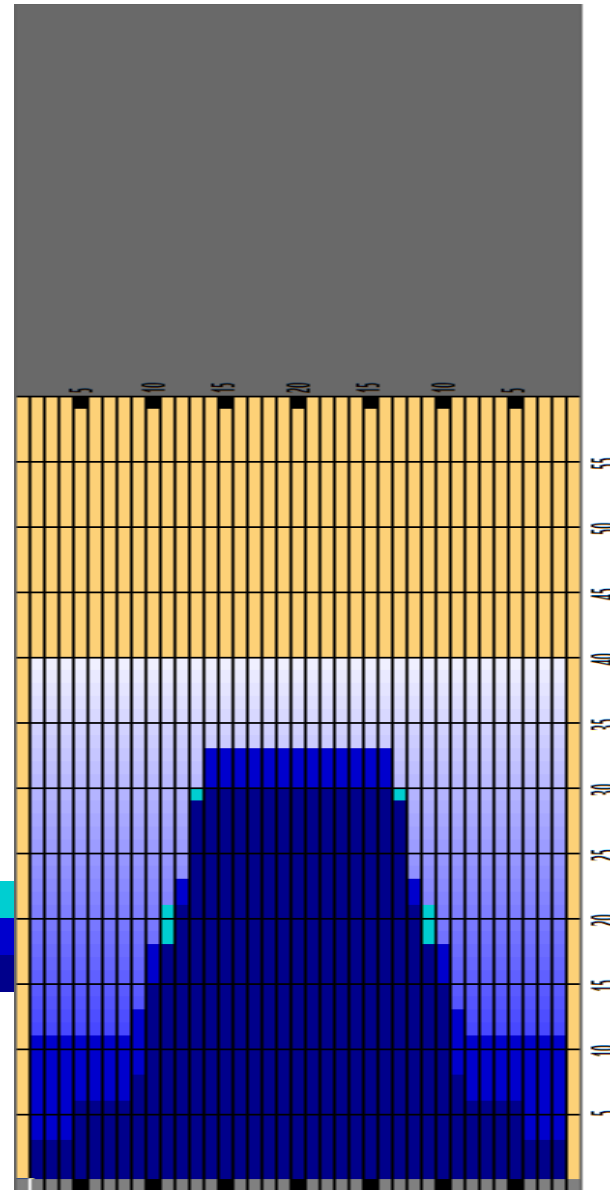
Ramadan Bowling Tournament 2018



Oil Pattern Distance	40	Reverse Brush Drop	40	Oil Per Board	50 uL
Forward Oil Total	14.5 mL	Reverse Oil Total	8.95 mL	Volume Oil Total	23.45 mL
Tank Configuration	Only A	Tank A Conditioner	ICE	Tank B Conditioner	ICE

	START	STOP	LOADS	SPEED	BUFFER	CROSSED	START	END	FEET	T.OIL
1	2L	2R	3	14	3	111	0.0	3.9	3.9	5550
2	5L	5R	1	18	3	31	3.9	6.4	2.5	1550
3	9L	9R	1	18	3	23	6.4	8.9	2.5	1150
4	10L	10R	2	22	3	42	8.9	15.1	6.2	2100
5	11L	11R	2	22	3	38	15.1	21.3	6.2	1900
6	13L	13R	3	22	3	45	21.3	30.6	9.3	2250
7	2L	2R	0	30	3	0	30.6	40.0	9.4	0

	START	STOP	LOADS	SPEED	BUFFER	CROSSED	START	END	FEET	T.OIL
1	2L	2R	0	30	3	0	40.0	33.0	-7.0	0
2	14L	14R	1	26	3	13	33.0	29.4	-3.6	650
3	13L	13R	2	22	3	30	29.4	23.2	-6.2	1500
4	12L	12R	2	18	3	34	23.2	18.1	-5.1	1700
5	10L	10R	2	18	3	42	18.1	13.0	-5.1	2100
6	9L	9R	1	14	3	23	13.0	11.1	-1.9	1150
7	2L	2R	1	14	3	37	11.1	9.2	-1.9	1850
8	2L	2R	0	10	3	0	9.2	0.0	-9.2	0



Cleaner Ratio Main Mix 5:1 Forward
 Cleaner Ratio Back End Mix 5:1 Reverse
 Cleaner Ratio Back End Distance 59 Combined
 Buffer RPM: 4 = 720 | 3 = 500 | 2 = 200 | 1 = 50



Item	3L-7L:18L-18R	8L-12L:18L-18R	13L-17L:18L-18R	18L-18R:17R-13R	18L-18R:12R-8R	18L-18R:7R-3R
Description	Outside Track:Middle	Middle Track:Middle	Inside Track:Middle	Middle: Inside Track	Middle:Middle Track	Middle:Outside Track
Track Zone Ratio	4.57	2.06	1.01	1.01	2.06	4.57

